

Fixing broken file references in ebase v. 2.20

L. Allen Poole
060613

Here's how it starts:

To: tac@lists.ebase.org , developers@lists.ebase.org
Reply-To: developers@lists.ebase.org

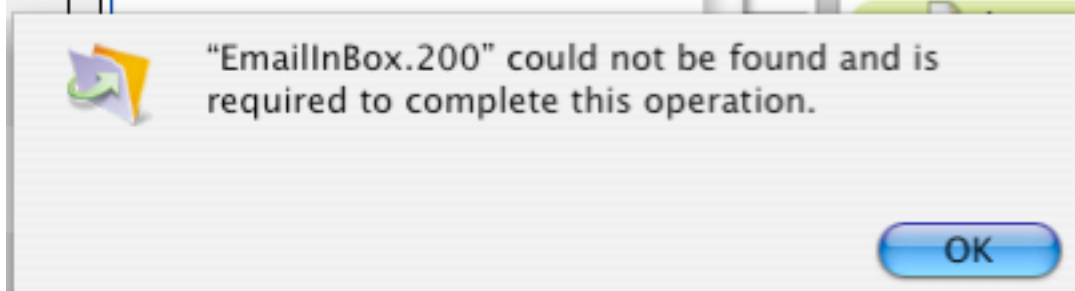
Testing: ebase 2.2 Server-Client

I think I've found another two broken file references:

When in the Email section > Email Processing > if you click on either 'DonateNow!' OR 'Archive FoundSet' - you receive an error: "EmailInBox.200 could not be found and is required to complete this operation."

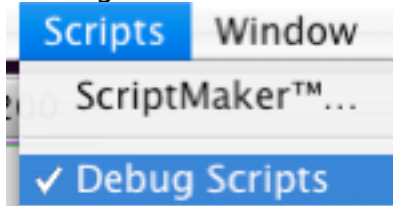
Make sure you've got the latest build, and that it's correctly installed over your network (hosted on FM Server, with the client files in the correct place and NO other ebase (.200) files on your client computer's hard drive. Open ebase using Netstart or DevLogin with the password "admin."

1. Try to reproduce the error observed.
Ka-ching! Found it.



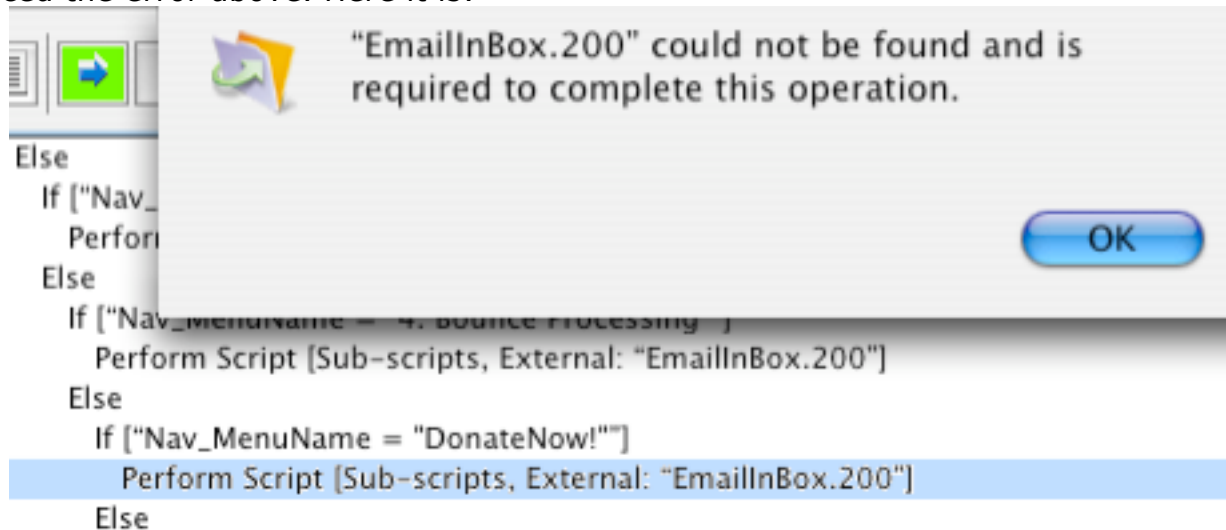
Use the <esc> key to back out of this dialog and the following "Open File" dialog. Cancel the current script when prompted. You'll be left in the file (often Navigator.200) that contains the broken file reference observed above.

2. If you've got FileMaker Developer, turn on FileMaker's script debugger.



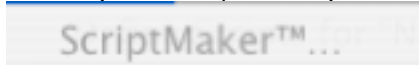
All the steps below are possible without FileMaker Developer, but the script debugger makes everything much easier.

3. Try again to reproduce the error observed, and this time figure out specifically which line of which script produced the error above. Here it is:

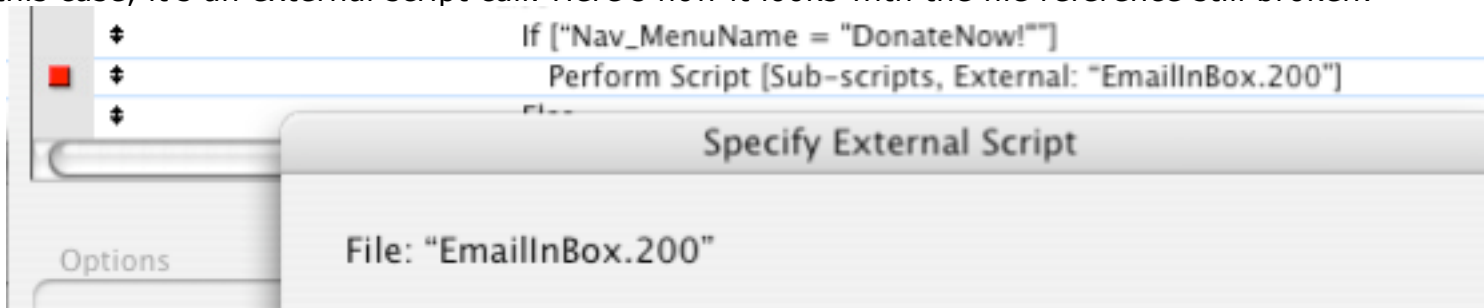


Note the script and specific line, and then cancel out of the script as above.

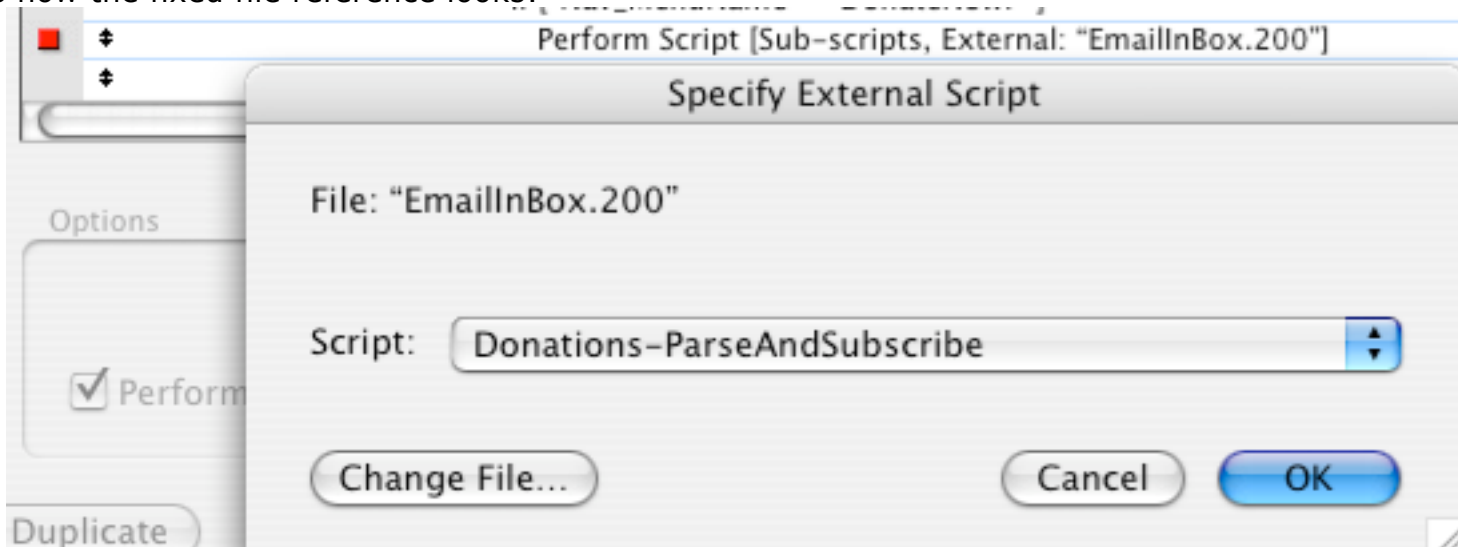
4. Open ScriptMaker, and open the offending script for editing.



5. In this case, it's an external script call. Here's how it looks with the file reference still broken:

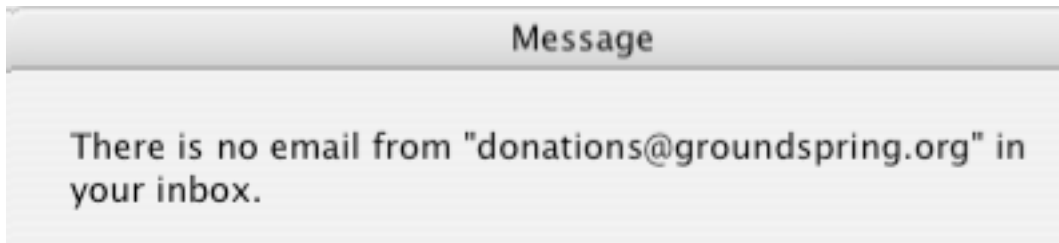


6. Click "change file" to specify the desired file and script. Sometimes it can be helpful to have a separate copy of ebase, installed on a single computer (not connected to your network!), to use for reference. Here's how the fixed file reference looks:



7. Close out of ScriptMaker (click "ok, ok, done"), turn off the script debugger, and then quit FileMaker Pro.

8. Restart ebase and try again to reproduce the problem, as in step 1 above. If you were successful, you'll see the originally expect result:



Note that broken file references may be in external script calls (as above), or in relationships

Relationship Name	Relationship	Related File
‡ DevLogin	<File Missing>	<File Missing>
‡ FoundSet1.200	<File Missing>	<File Missing>
‡ FoundSet2.200	<File Missing>	<File Missing>
‡ NetStart	<File Missing>	<File Missing>
‡ _kTrue\EIN_kTrue	<File Missing>	<File Missing>

or in value lists that refer to a list in another file, or they may be stored in "import records" script steps.